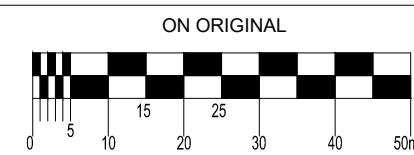
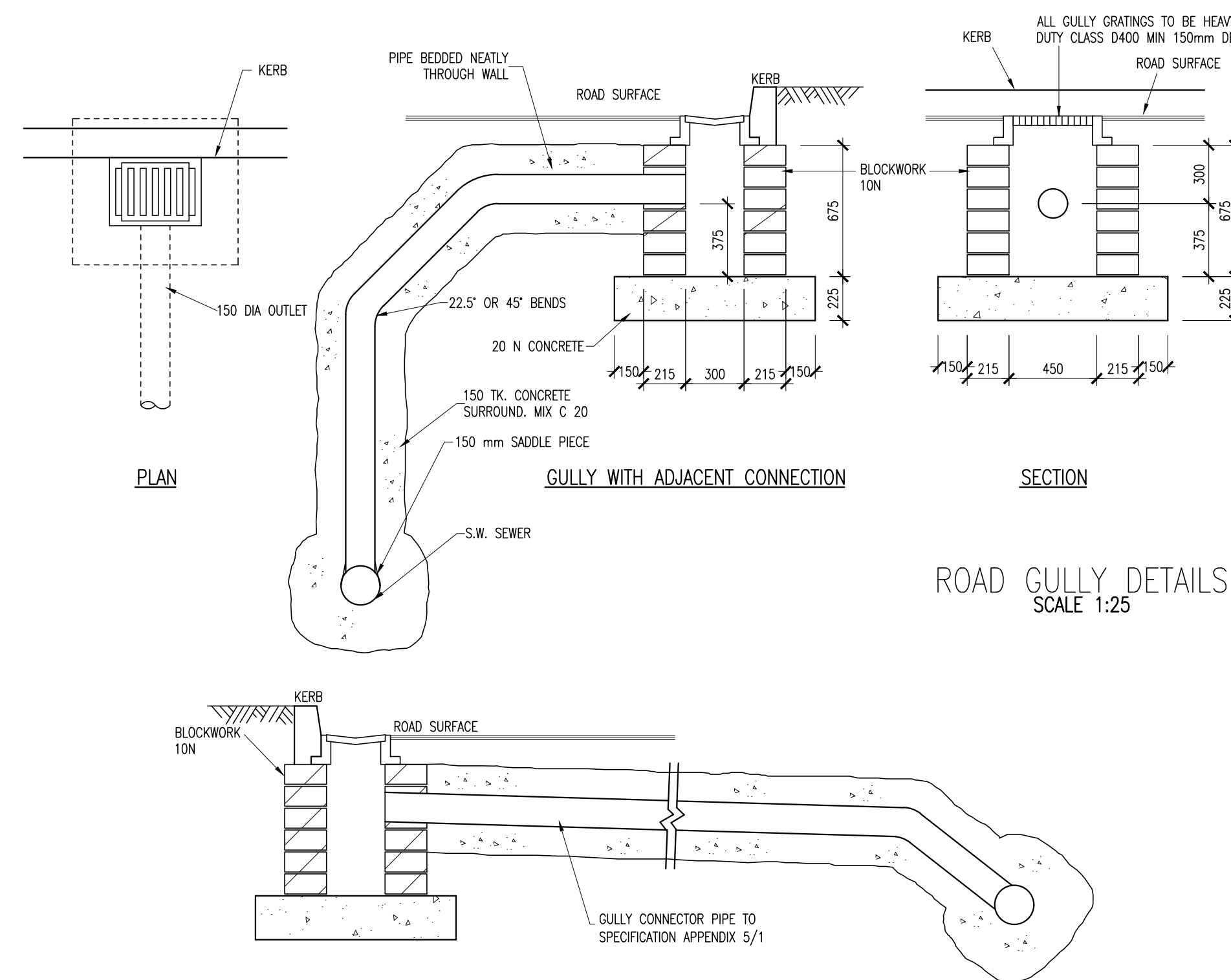
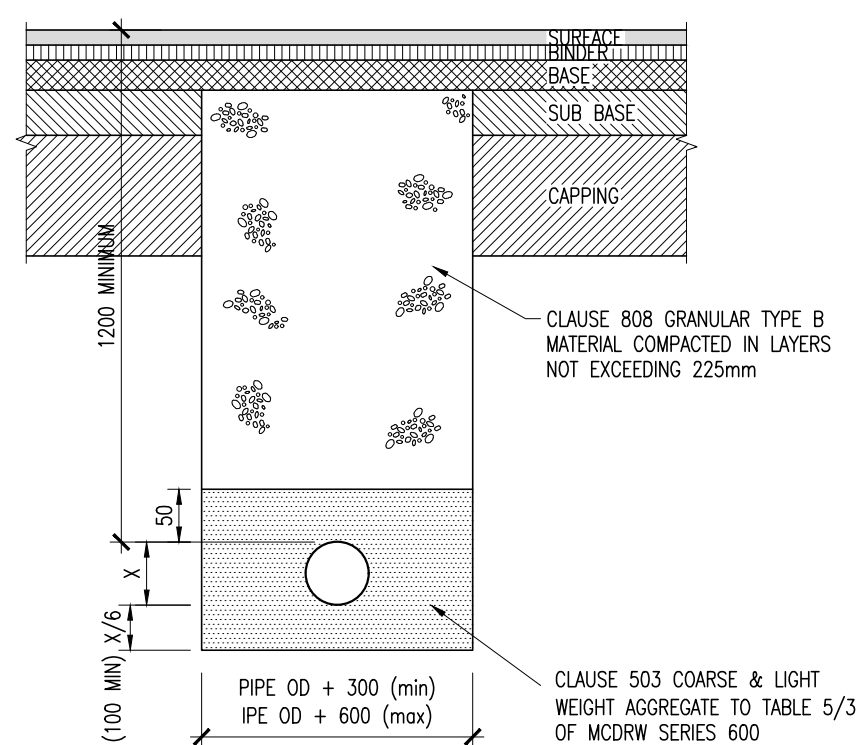
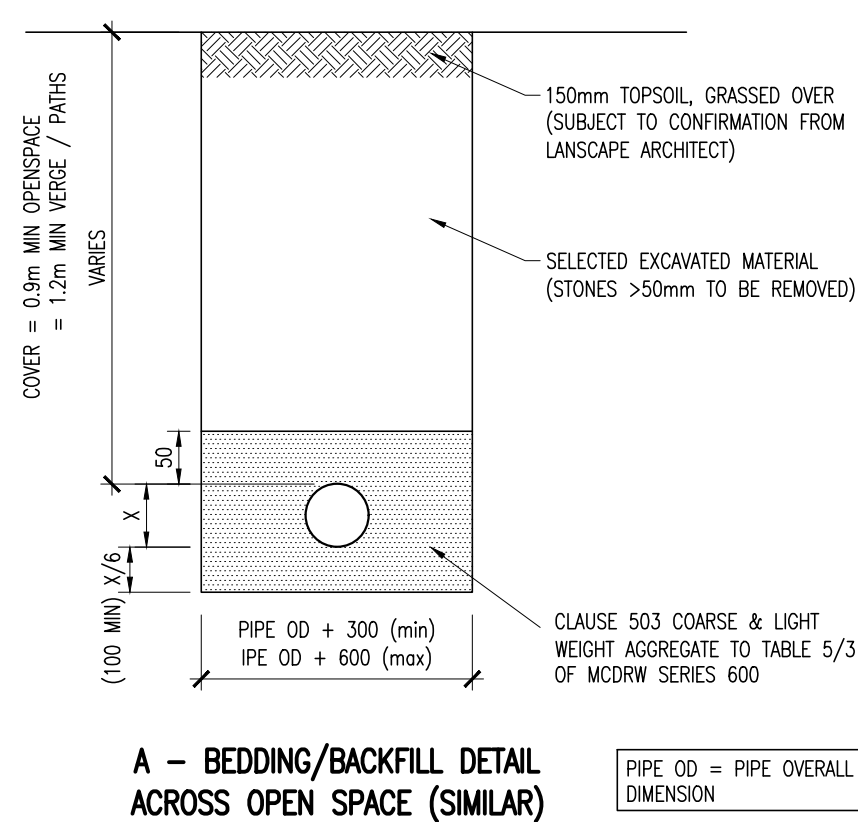
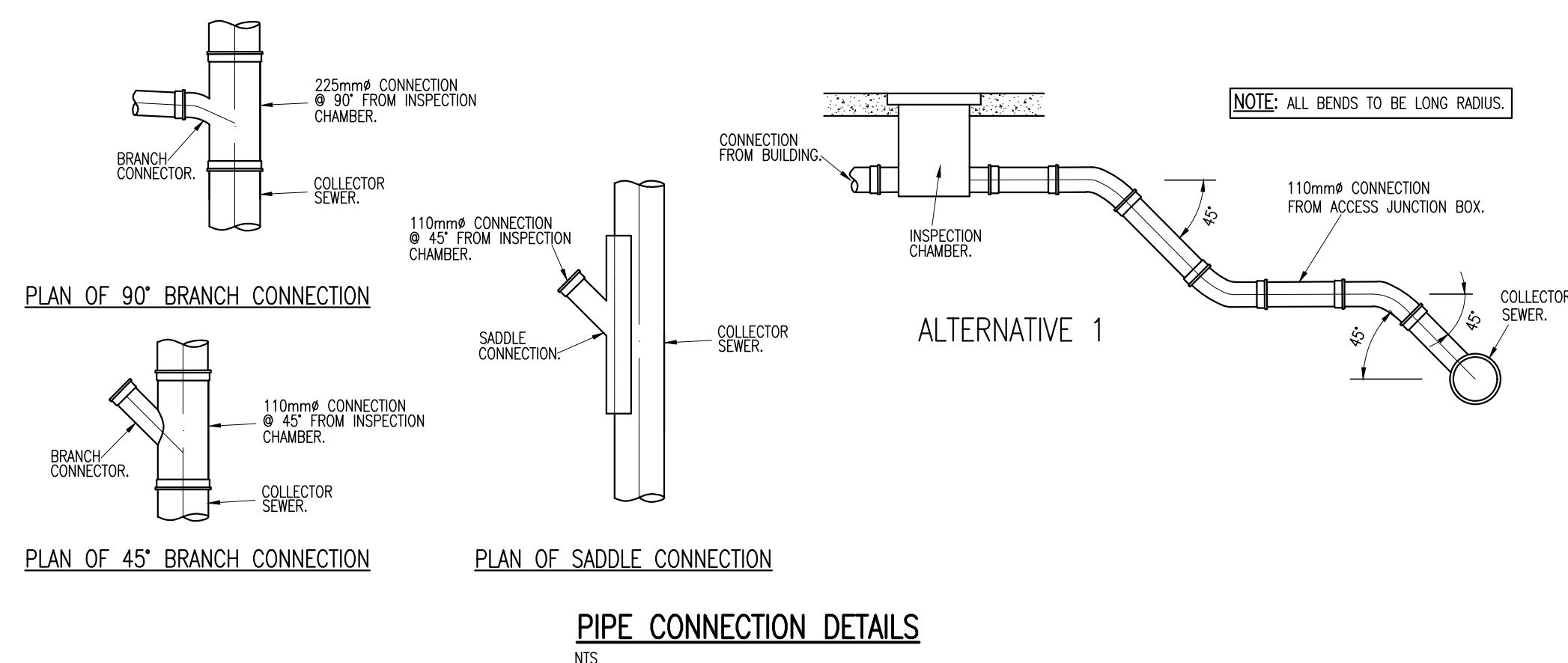
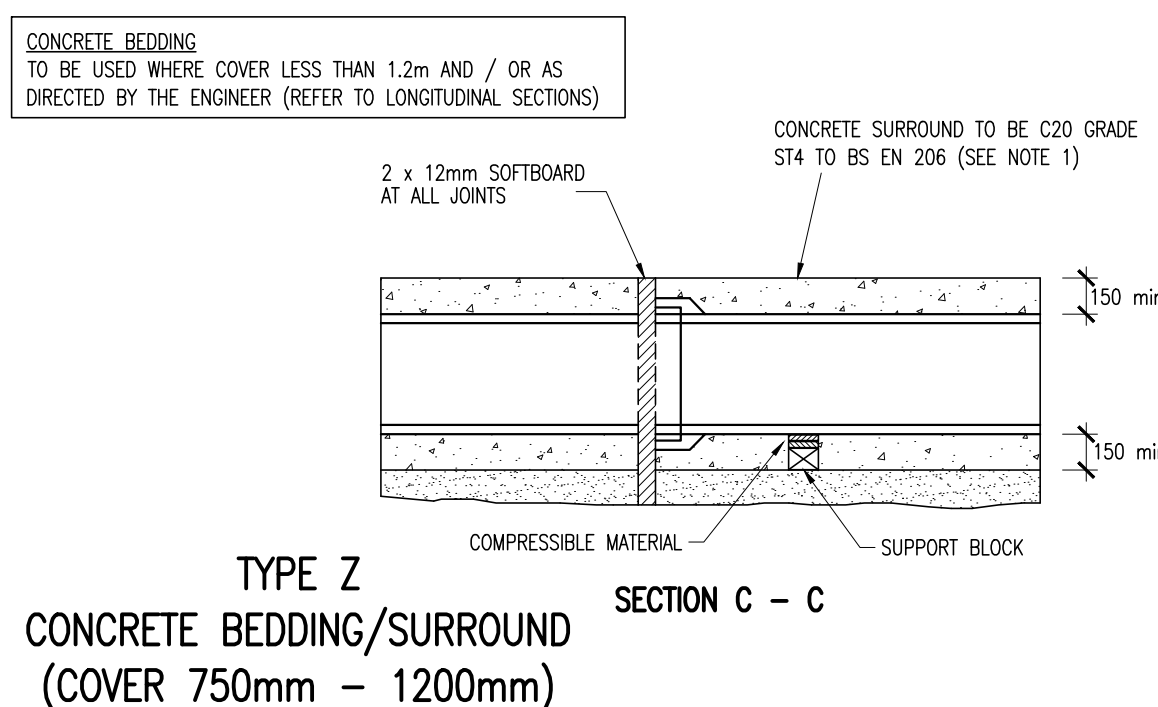
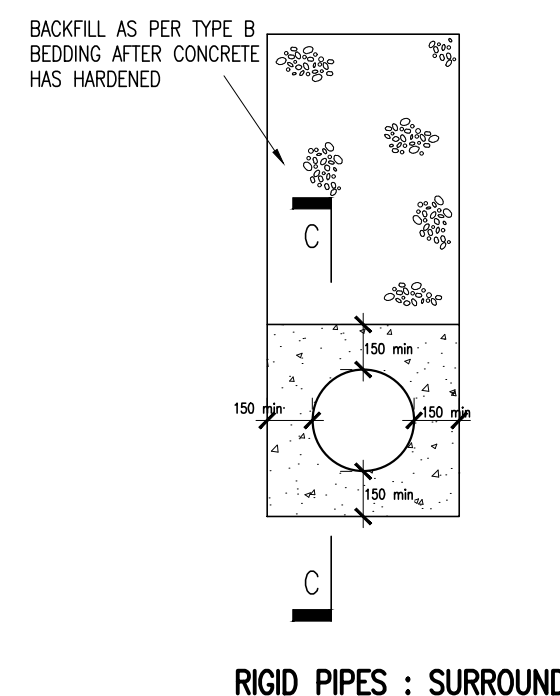


DIMENSIONS			PLAN			
UNIT REF No.	NOMINAL FLOW	LENGTH	DIAMETER	STD. PIPE	APPROX. EMPTY WEIGHT (KG)	FALL ACROSS UNIT
NSBP006	6 L/S	1700	1350	160	160	100
NSBE015	15 L/S	2947	1220	315	240	100
NSBE030	30 L/S	4265	1420	450		100



NOTES:

1. ALL WORKS TO BE CONSTRUCTED IN ACCORDANCE WITH NRA SPECIFICATION FOR ROAD WORKS U.N.O.
2. ALL REINFORCED CONCRETE ON THIS DRAWING SHALL BE U.N.O. 35/200 COVER = 50mm MIN.
3. SURFACE FINISHES FOR CONCRETE:
 - CLASS F1 FOR ALL CONCRETE 100mm OR MORE BELOW GROUND LEVEL.
 - CLASS F3 FOR ALL EXPOSED CONCRETE ABOVE 100mm BELOW GROUND LEVEL.
4. ALL EXPOSED CORNERS ON CONCRETE SHALL BE CHAMFERED WITH 25mm x 25mm CHAMFERS.
5. ALL STRUCTURAL CONCRETE (HEADWALLS, RC MANHOLES, PETROL INTERCEPTOR SLABS) TO RECEIVE MC OR 1680 (OR SIMILAR APPROVED TAP MODIFIED EPOXY RESIN) TO ALL BURED SURFACES, TO FINISH 100mm BELOW GROUND LEVEL.
6. ALL SEWERS SHALL BE PRESSURE TESTED PRIOR TO BACKFILLING.
7. RIGID PIPES SHALL MEAN CAST OR SPUN IRON, CONCRETE, ASPBESTOS CEMENT OR CLAY.
8. CLASS 400 MANHOLE COVER FRAMES TO BE 150mm DEEP IN ROADS AND 100mm DEEP IN FOOTPATHS AND GREEN AREAS.
9. ALL AGGREGATES PROPOSED FOR USE ON THIS SCHEME SHALL MEET FULLY THE REQUIREMENTS OF THE NRA SPECIFICATION FOR ROAD WORKS AND IN ADDITION THE REQUIREMENTS STATED IN STANDARD RECOMMENDATION S.R. 21-1 IN GUIDANCE ON THE USE OF I.S. EN 12342:2002 +A1:2007-AGGREGATES FOR UNBOUND AND HYDRAULICALLY BOUND MATERIALS FOR USE IN CIVIL ENGINEERING WORK AND ROAD CONSTRUCTION.
10. ALL FOUL SEWERS, MANHOLES, AND CONNECTIONS TO BE CONSTRUCTED IN ACCORDANCE WITH IRISH WATER CODE OF PRACTICE AND STANDARD DETAILS.
11. ALL SURFACE WATER SEWERS, MANHOLES, AND CONNECTIONS TO BE CONSTRUCTED IN ACCORDANCE WITH THE WATER DUBLIN REGIONAL CODE OF PRACTICE FOR DRAINAGE WORKS.